

METAL GLAZ

architectural aluminium innovation

COMPANY PROFILE

- BANKS
- HOTELS
- SHOP LOTS
- BUNGALOW
- HIGH RISE OFFICES
- INDUSTRIAL FACTORIES





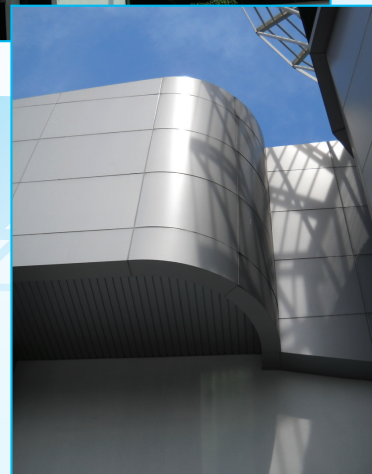
Project	: Prisma Delight Sdn Bhd
Location	: Glenmarie, Shah Alam, 5 Storey Office & Automobile Showroom Building for Mazda
Architect/Consultant	: Aeon Arkitek
Main Contractor	: Shen Yong Engineering Works Sdn Bhd
Completion	: 2012
Products Information	: Stickwall Curtain Wall Facade, Aluminium Composite Panel Facade, Aerofoil Sun Louvres Facade, Aluminium Fixed Louvres Panels, Aluminium Strip Ceilling, Glass Canopy & High End Windows



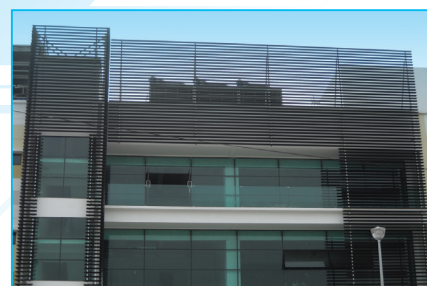
Project	: Hup Kuan Sdn Bhd and Flying Star Sdn Bhd, 2 Units 4 Storey Office & Automobile Showroom For Peugeot
Location	: Glenmarie, Shah Alam
Architect/Consultant	: Aeon Arkitek
Main Contractor	: SQA Builders Sdn Bhd
Completion	: 2011
Products Information	: High End Windows and Fixed Glass Panels, Fixed Louvres Panel & Glass Canopy



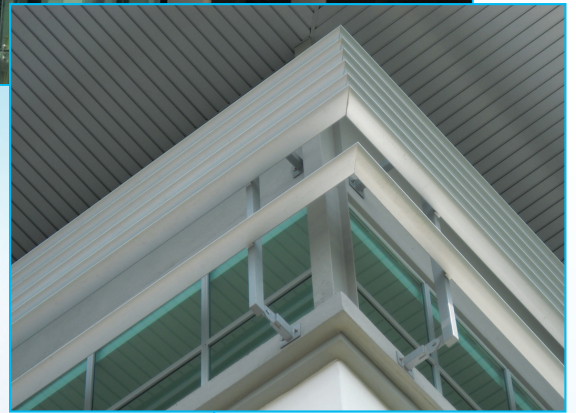
Project	: Great Avenue(M) Sdn Bhd,2 Storey Office & Warehouse Building
Location	: Bukit Kemuning, Shah Alam
Architect/Consultant	: Aeon Arkitek
Main Contractor	: Poh Fah Construction Sdn Bhd
Completion	: 2011
Products Infomation	: Aluminium Composite Panel Canopy and Roof Eaves,Louvres Facade, Sunshading Device,Aluminium Strip Ceilling,Automatic Sliding Glass Door & High End Windows



Project	: CENTURY LOGISTIC SDN BHD, Refurbishment & Upgrading External Facade 3 Storey Office and Warehouse Building
Location	: North Port, Klang
Architect/Consultant	: TYL Arkitek
Main Contractor	: Kindah Construction Sdn Bhd
Completion	: 2011
Products Information	: Semi-Structure Curtain Wall Facade, Aluminium Composite Panel Facade & Round Column, Aluminium Strip Ceiling and Spider Dot Point Fixing Glass Canopy.



Project	: DR Group Holdings Sdn Bhd, 3 Storey Office & Warehouse Building
Location	: Kota Damansara, Petaling Jaya
Architect/Consultant	: Aeon Arkitek
Main Contractor	: Shen Yong Engineering Work Sdn Bhd
Completion	: 2010
Products Information	: Semi-Structure Glazed Wall, Aerofoil Sun Louvres Facade, Glass Canopy & High End Windows



Project	: Malaysian Allied Health Sciences Academy Sdn Bhd , 3 Storey Office & Academy Centre Building
Location	: Jalan Universiti, Petaling Jaya
Architect/Consultant	: Aeon Arkitek
Main Contractor	: Multiguna Construction & Development Sdn Bhd
Completion	: 2010
Products Information	: Spider Dot Point Fixing Glass Lift, Aerofoil Sun Louvres Facade, Aluminium Composite Panel Roof Eaves, Aluminium Strip Ceiling & High End Windows



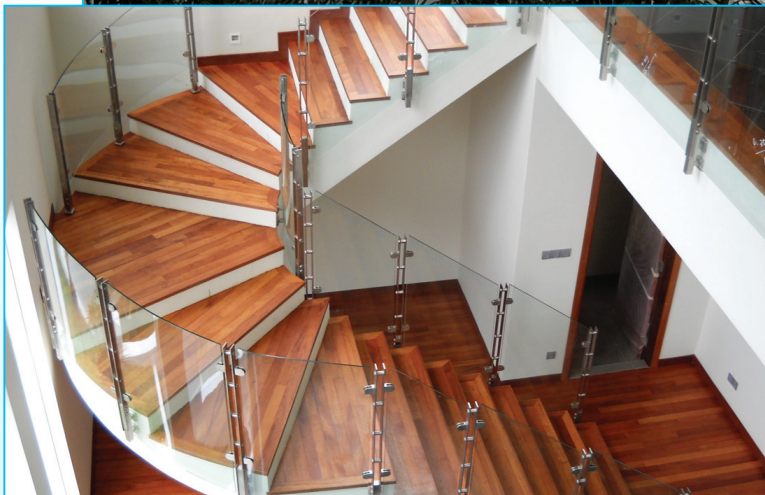
Project	: Public Bank Berhad, 3 Storey Office & Banking Hall Building
Location	: Sri Petaling, Kuala Lumpur
Architect/Consultant	: Arkitek IPPM Sdn Bhd
Main Contractor	: Kindah Builders Sdn Bhd
Completion	: 2011
Products Information	: Aluminium Composite Panel Facade & Semi-Structure Glazed Wall



Project	: NAZ Meccical Suppliers Sdn Bhd,3 Storey Office & Warehouse Building
Location	: Bandar Enstek, Labu, Negeri Sembilan
Architect/Consultant	: Aeon Arkitek
Main Contractor	: Multiguna Construction & Development Sdn Bhd
Completion	: 2011
Products Infomation	: Steel Structural Glass Facade, Glass Canopy & High End Windows



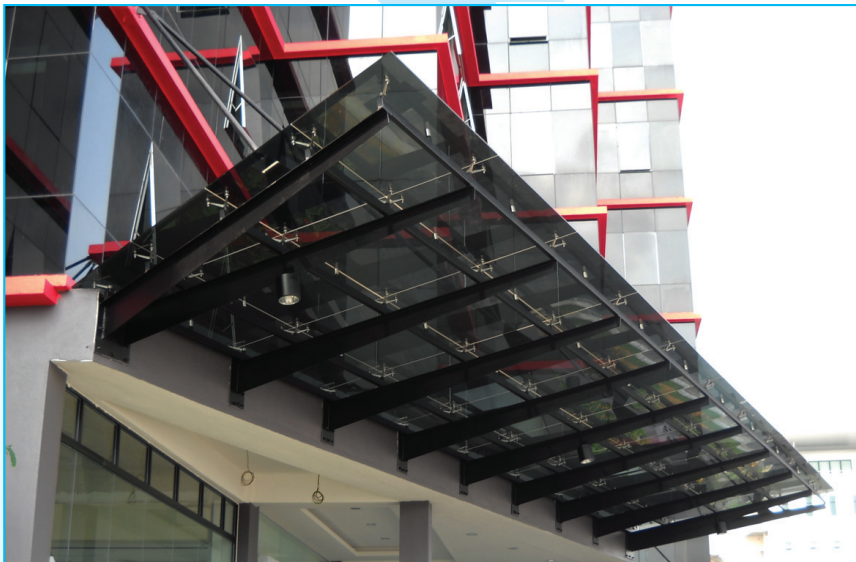
Project	: BEHN MEYER(M) SDN BHD, Refurbishment & Upgrading External Facade For 4 Storey Office Building
Location	: Taman Perindustrian UEP, Subang
Architect/Consultant	: TYL Arkitek
Main Contractor	: Kindah Construction Sdn Bhd
Completion	: 2010
Products Information	: Aluminium Composite Panel Facade & Bullnose Roof Eaves, Aluminium Strip Ceiling, Window Wall & Steel Sunshade



Project	: Mr Fred Choo Residential, 4 Storey Bungalow
Location	: Jalan Setiakasih, Bukit Damansara
Architect/Consultant	: Silk Woo Architect
Main Contractor	: Venture Wizard Sdn Bhd
Completion	: 2010
Products Infomation	: High End Windows and Doors and Staircase & Balcony Stainless Steel Glass Railing



Project	: 4 units 2 1/2 Storey Super Link House
Location	: Bukit Jelutong, Selangor
Architect/Consultant	: Aeon Arkitek
Main Contractor	: YWC Engineers & Constructors Sdn.Bhd
Completion	: 2010
Products Information	: High End Windows & Door and Sunscreen Facade



Project	: Continental Oasis Sdn Bhd, 6 Storey Office Building
Location	: Petaling Jaya
Architect/Consultant	: TYL Arkitek
Main Contractor	: Haw Ah Bee Construction Sdn Bhd
Completion	: 2010
Products Information	: Semi-Structure Curtain Wall Facade, Spider Dot Point Fixing Glass Canopy, Frameless Fixed Glass Panels & High End Windows



Project	: Dazzling Township 5 Storey Office & Warehouse
Location	: Petaling Jaya
Architect/Consultant	: TYL Arkitek
Main Contractor	: Haw Ah Bee Construction Sdn.Bhd
Completion	: 2010
Products Infomation	: Windows, Spider Glass Canopy, Aerofoil Sunshading & Aluminium Roof Eave cladding



Project	: Amway(M) Sdn Bhd, New head Office & Operational Facility Bulding
Location	: Petaling Jaya
Architect/Consultant	: SN LOW & Associates Sdn Bhd
Main Contractor	: Frontier Bond (M) Sdn Bhd
Completion	: 2010
Products Infomation	: Semi-Structure Glazed Wall,Spider Dot Point Fixing Glass Wall,Aluminium Composite Panel Facade and Canopy,Sunshading Facade,Automatic Sliding Glass Door & High End Windows

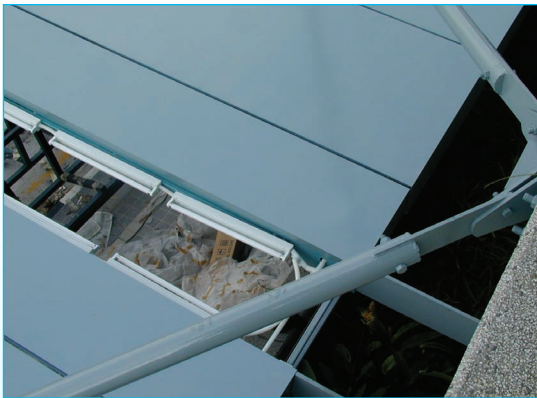




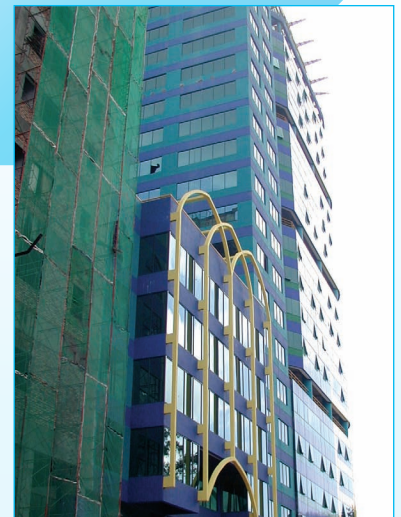
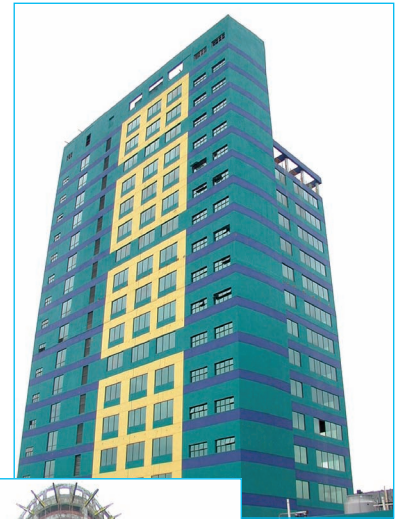
Project	: 2 Storey Tile & Interior Decoration Centre
Location	: Segambut, Kuala Lumpur
Architect/Consultant	: Aeon Arkitek
Main Contractor	: Guan Lee Construction
Completion	: 2010
Products Information	: Aluminium Cladding Facade, Glass Canopy & Storefront



Project	: Leather Seats Industries Office Building and Warehouse
Location	: Puchong
Products Information	: "ALCOTEX" Composite Cladding Facade Stich Wall Curtain, High Performance Window Wall & Fixed Louvres Screen.



Project	: Menara Telekom Taxi Stand
Location	: Bangsa Kuala Lumpur
Products Information	: Aluminium Cladding Suspended Canopy



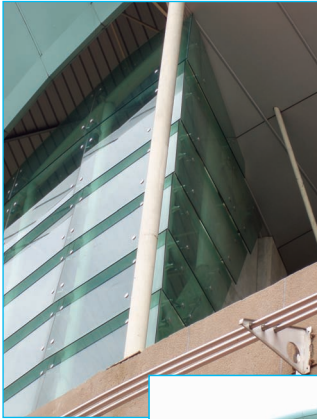
Project	: Menara MAA
Location	: Seremban, Negeri Sembilan
Products Information	: Aluminium Cladding Facade, Semi-Structural Glazed Facade, High Performance Window Wall & Steel Structure Sun- Shading.



Project	: Pusat Teknologi Pengurusan (MTC) Intan Hostel Building
Location	: Bukit Kiara, Kuala Lumpur
Products Information	: Stich Wall Curtain Wall, High Performance Casement Window & Suspended Glass Canopy with Stainless, Steel Tension Rod



Project	: Tenaga Nasional Administration Office Building
Location	: Kuala Kubu Bharu
Products Information	: Semi-Structural Glazed Curtain Wall Facade



Project	: Multi Purpose Hall
Location	: Precinct 9, Putrajaya
Products Information	: Spider Dot-Point Fixing Louvres Glass Wall, Aluminium Cladding Round Column, Aerofoil & Roff Eave



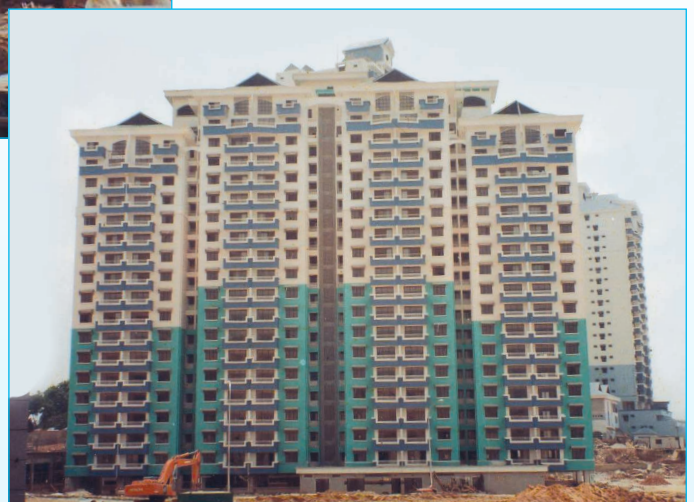
Project	: 2 Units of 3 Storeys Bungalow
Location	: Bukit Damansara, Petaling Jaya
Products Information	: "ALUCOBOND" Composite Cladding, Stainless Steel Copping and High Performance Windows & Doors



Project	: 5 Storeys Office Building
Location	: Jalan Sungai Besi, Kuala Lumpur
Products Information	: "ALUCOMAX " Composite Cladding Facade and Structural Glazed Curtain Wall Facade



Project	: Century Containers Office and Warehouse Building
Location	: Port Klang
Products Information	: "ALUCOMAX " Composite Cladding Roff Eave Facade, Structural Glazed Curtain Wall & Steel Structure Sun- Sunding



Project	: 1988 Commonwealth Games Village
Location	: Bukit Jalil, Kuala Lumpur
Products Information	: High Performance Casement Windows and Siding doors



Project	: Dataran Prima Business Park
Location	: Petaling Jaya
Products Information	: Stich Wall Curtain Wall Facade & High Performance Window Wall



Project	: Kelana Centre Point Business Centre
Location	: Kelana Jaya, Petaling Jaya
Products Information	: Semi- Structural Glazed Curtain Wall Facade & High Performance Window



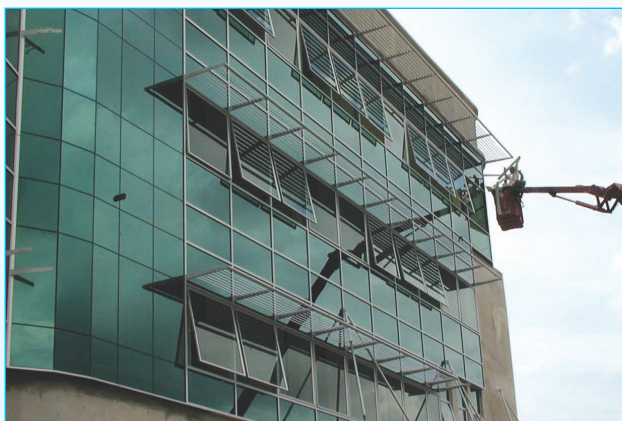
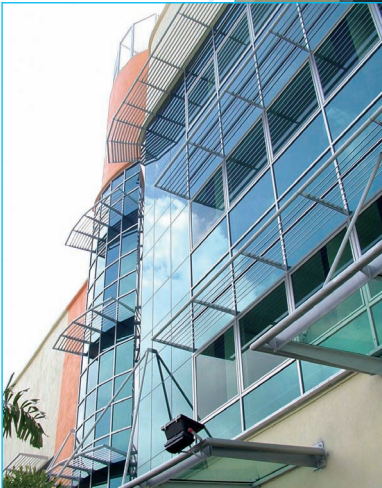
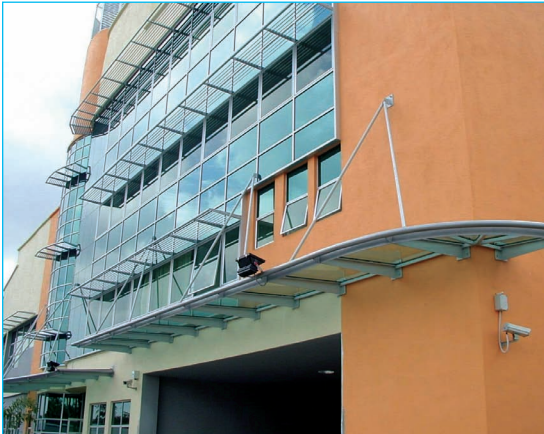
Project	: Institut Kesihatan Umum
Location	: Bangsar, Kuala Lumpur
Products Information	: " MIRAWALL " Aluminium Cladding Facade, Stich Wall Curtain Wall, Frameless Suspended Glass System & High Performance Casement Window



Project	: Kompleks Kejuruteraan UITM
Location	: Shah Alam
Products Information	: High Performance Top Hing Windows & Steel Perforated Sun- Shading



Project	: Top Glove Office and Factory Building
Location	: Jalan Meru, Klang
Products Information	: "ALCOPLA" Composite Cladding Roff & Entrance Canopy, Semi-Structural Glazed Curtain Wall Facade & High Performance Fixed Windows



Project	: Venus Gateway Office and Warehouse Building
Location	: Jalan Meru, Klang
Products Information	: Stich Wall Curtain Wall Facade, High Performance Window, Suspended Sun-Shading Louver & Steel Structure Suspended Glass System